

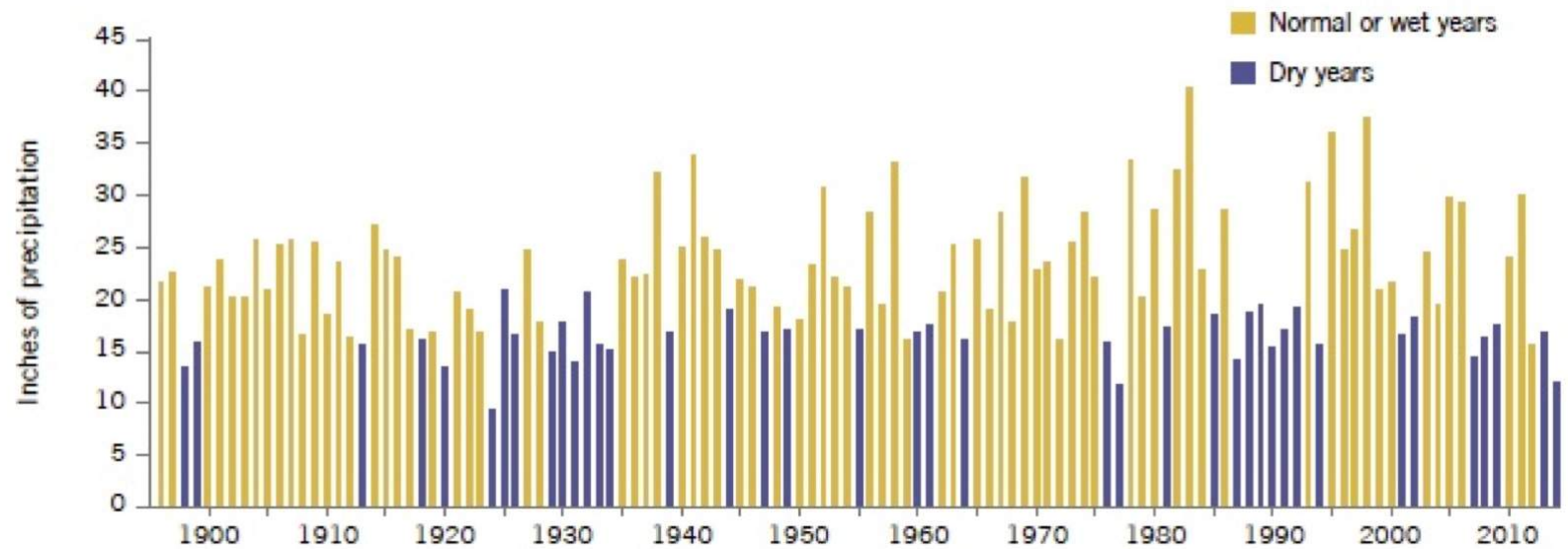
# A (Very) Quick Primer on the Drought

Bruce Riordan, CRI



# California Precipitation

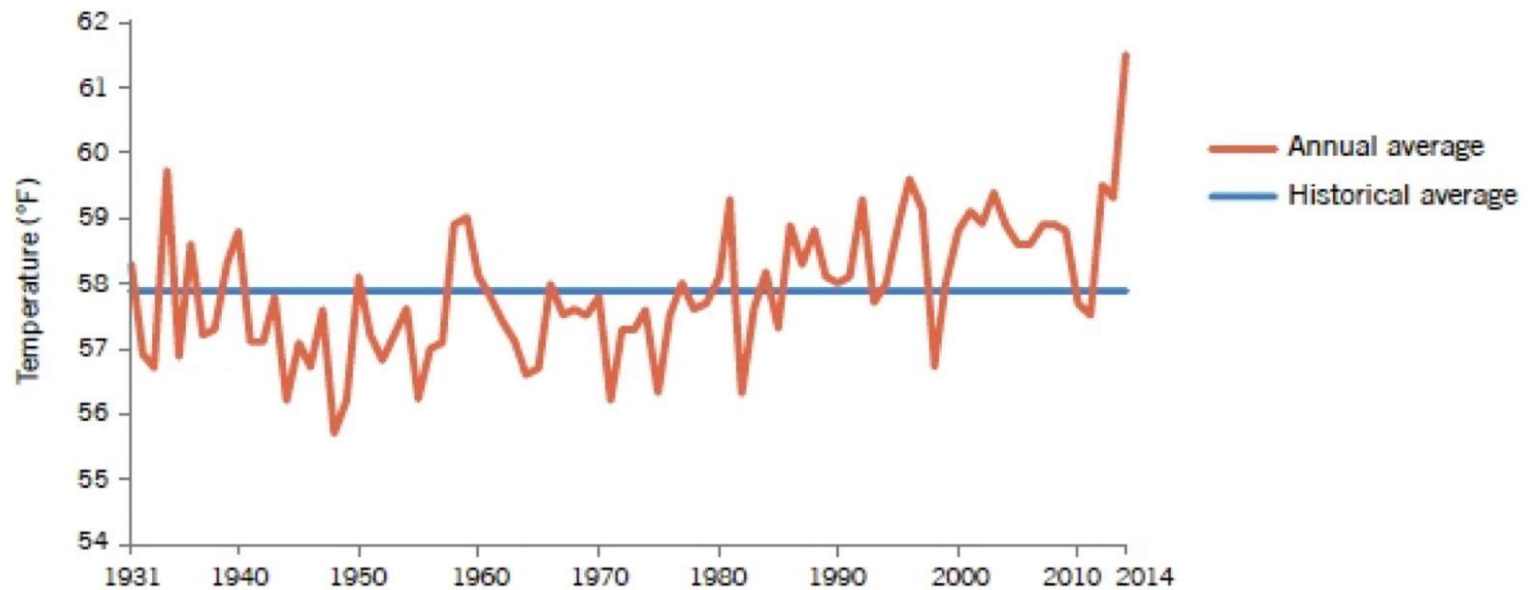
DROUGHTS ARE A RECURRING FEATURE OF CALIFORNIA'S CLIMATE



Source: PPIC

# California Temperatures

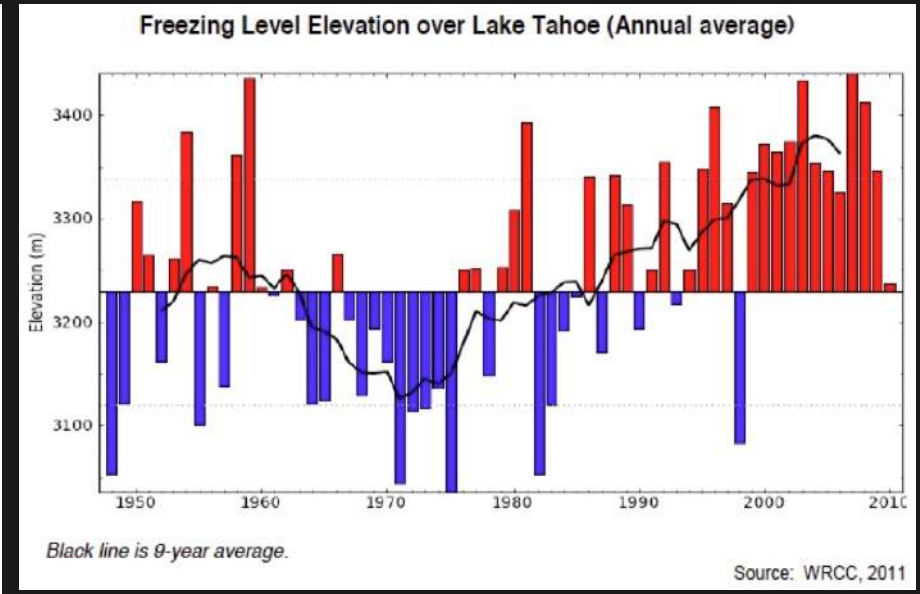
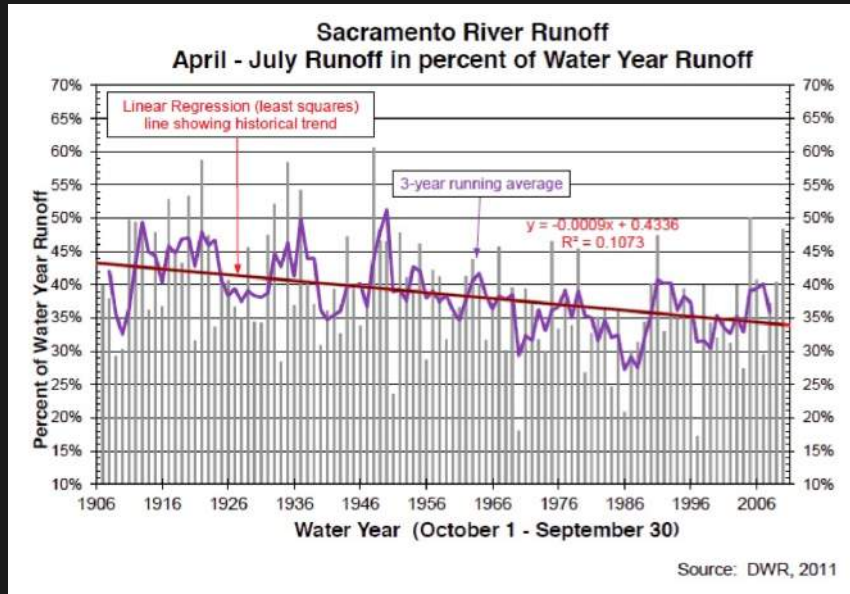
## CALIFORNIA IS GETTING WARMER



SOURCE: National Oceanic and Atmospheric Administration.

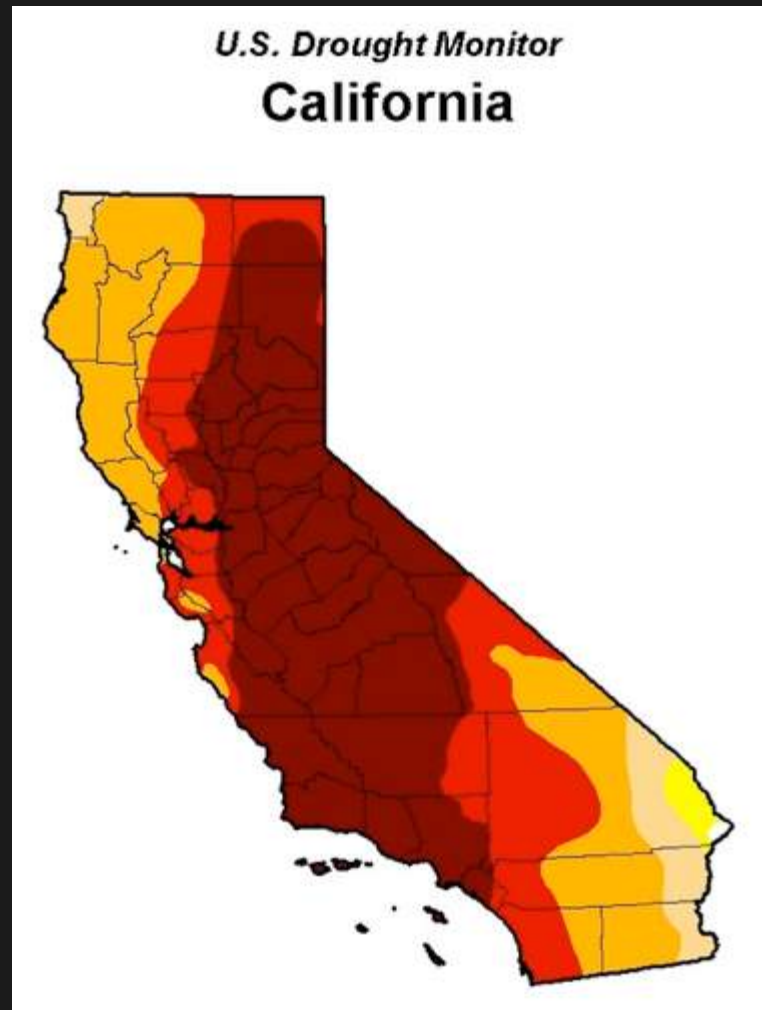
Source: PPIC

# Changes in Sierra



Source: Indicators of Climate Change in California

# California Drought



Source: U.S. Drought Monitor



California Drought: Landlords pass along water bills to coax apartment dwellers to conserve



Drought kills 12 million trees in California's national forests



Drought linked to polluted winter air

SFGATE <http://www.sfgate.com/bayarea/article/California-drought-Silicon-Valley-faces-sweeping-6274158.php>

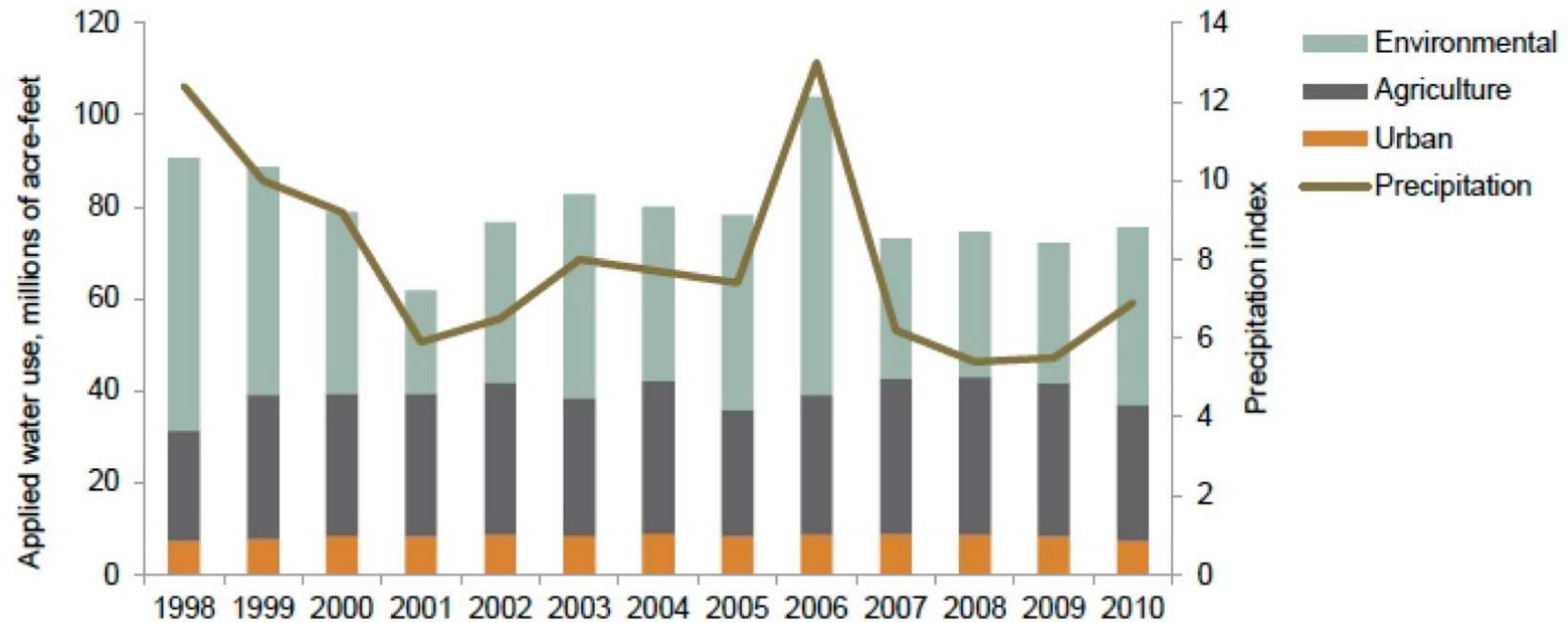
California drought: Silicon Valley faces sweeping water cuts

By Kurtis Alexander Updated 6:03 pm, Tuesday, May 19, 2015

ADVERTISEMENT

# California Water Use

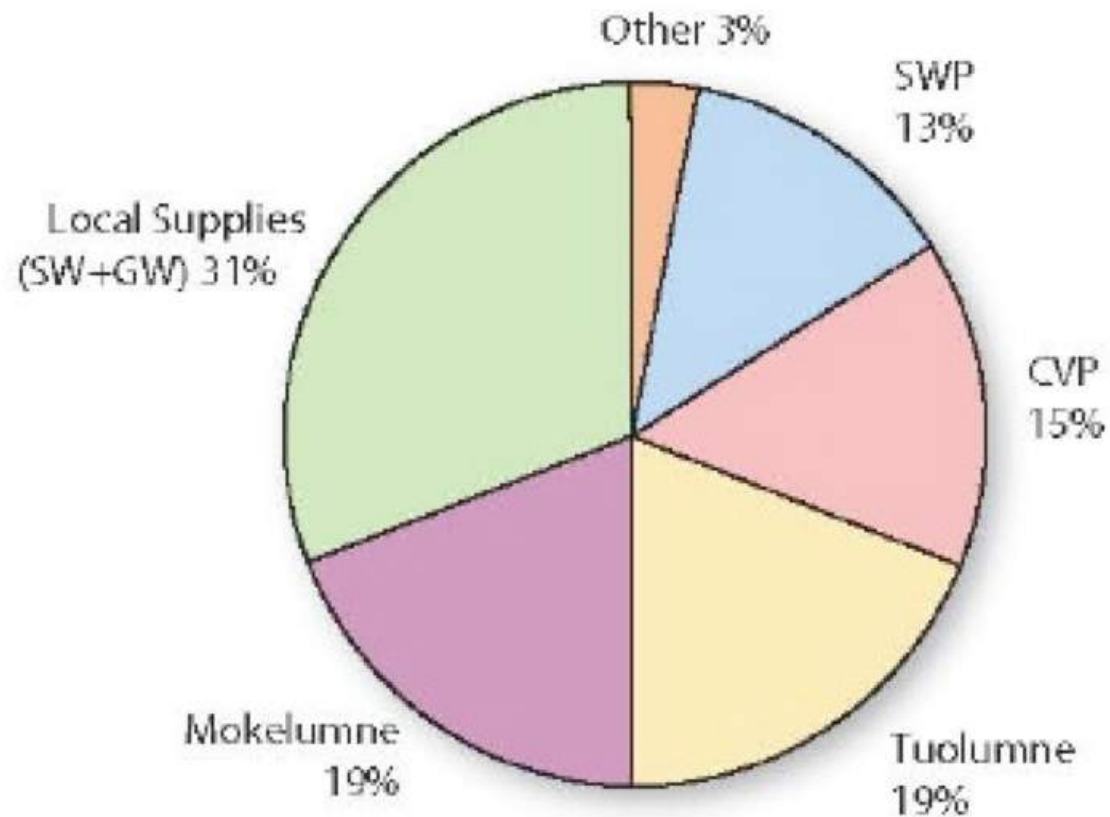
Environmental water use fluctuates most



Source: PPIC

# Bay Area Water Sources

**Figure 2-18: Bay Area Water Use by Supply Source**



Source: IRWMP

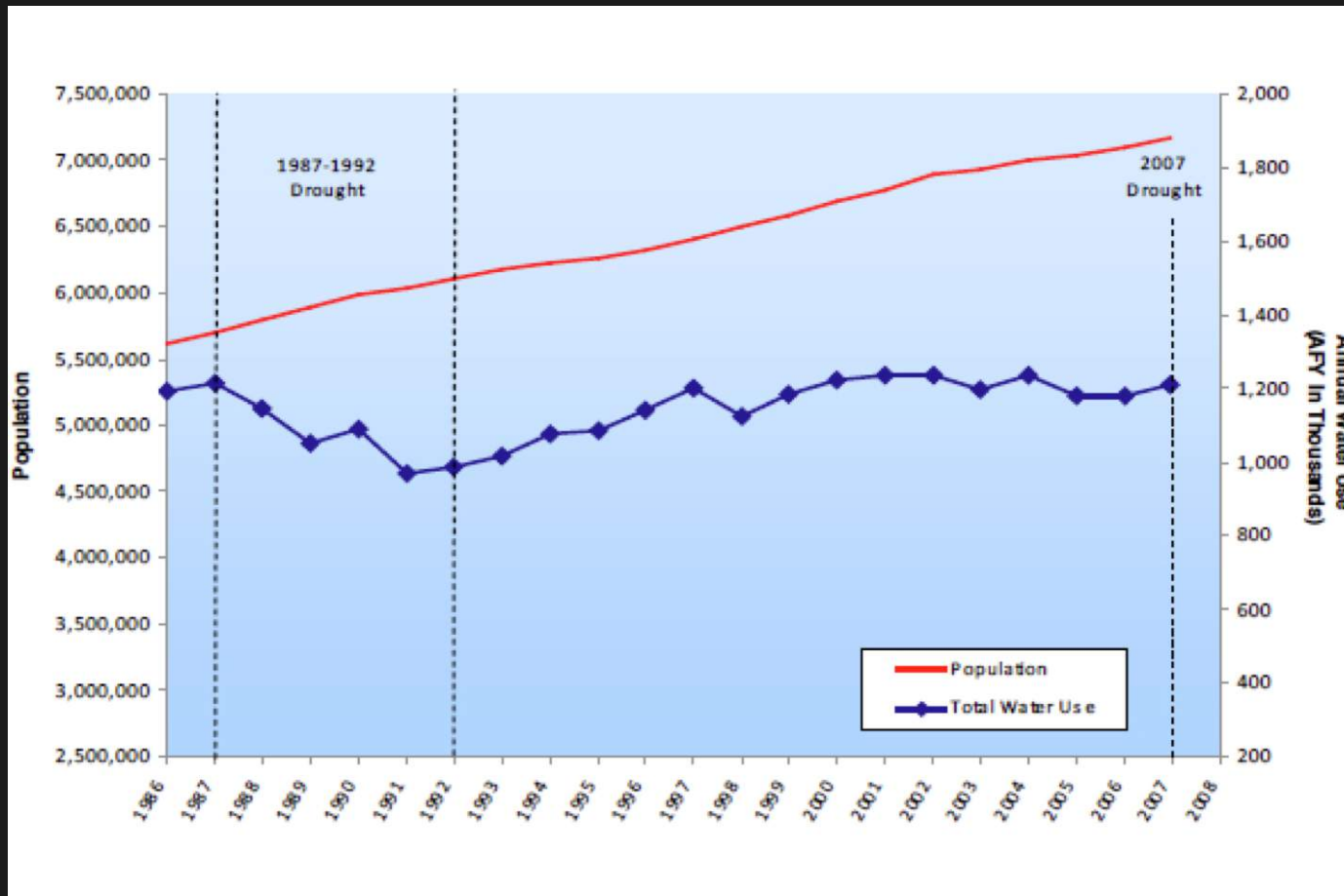


# Bay Area Major Water Agencies



Source: IRWMP

# Bay Area Water Use



Source: IRWMP

# The Drought Challenge

Executive Department  
State of California

## EXECUTIVE ORDER B-29-15

**WHEREAS** on January 17, 2014, I proclaimed a State of Emergency to exist throughout the State of California due to severe drought conditions; and

**WHEREAS** on April 25, 2014, I proclaimed a Continued State of Emergency to exist throughout the State of California due to the ongoing drought; and

**WHEREAS** California's water supplies continue to be severely depleted despite a limited amount of rain and snowfall this winter, with record low snowpack in the Sierra Nevada mountains, decreased water levels in most of California's reservoirs, reduced flows in the state's rivers and shrinking supplies in underground water basins; and

**WHEREAS** the severe drought conditions continue to present urgent challenges including: drinking water shortages in communities across the state, diminished water for agricultural production, degraded habitat for many fish and wildlife species, increased wildfire risk, and the threat of saltwater contamination to fresh water supplies in the Sacramento-San Joaquin Bay Delta; and

**WHEREAS** a distinct possibility exists that the current drought will stretch into a fifth straight year in 2016 and beyond; and

**WHEREAS** new expedited actions are needed to reduce the harmful impacts from water shortages and other impacts of the drought; and

**WHEREAS** the magnitude of the severe drought conditions continues to present threats beyond the control of the services, personnel, equipment, and facilities of any single local government and require the combined forces of a mutual aid region or regions to combat; and

**WHEREAS** under the provisions of section 8558(b) of the Government Code, I find that conditions of extreme peril to the safety of persons and property continue to exist in California due to water shortage and drought conditions with which local authority is unable to cope; and

**WHEREAS** under the provisions of section 8571 of the California Government Code, I find that strict compliance with various statutes and regulations specified in this order would prevent, hinder, or delay the mitigation of the effects of the drought.

**NOW, THEREFORE, I, EDMUND G. BROWN JR.,** Governor of the State of California, in accordance with the authority vested in me by the Constitution and statutes of the State of California, in particular Government Code sections 8567 and 8571 of the California Government Code, do hereby issue this Executive Order, effective immediately.

# Bay Area Scorecard

AGENCY	Total Water Production (Jan 14-Feb 15)	Saved Jun 14-Feb 15 vs. 2013	R-GPCD (Jul-Sep 14)	STATE REQ vs. 2013
<b>Alameda County</b>				
Alameda County Water District	8,458,900,000	20%	88.3	16%
Dublin San Ramon	1,959,505,000	29%	84.7	16%
EBMUD	46,127,500,000	12%	94.2	16%
Hayward	3,957,222,483	12%	62.3	8%
Livermore (City)	1,199,514,000	27%	100.3	20%
Livermore (CWS)	1,909,163,511	31%	120.5	24%
Pleasanton	3,099,891,000	30%	119.8	24%
San Lorenzo Valley	335,050,267	20%	77.9	12%
<b>Contra Costa County</b>				
Antioch	4,042,923,000	13%	141.9	28%
Bay Point	452,672,802	12%	69.2	12%
Brentwood	2,663,210,000	12%	174.9	32%
Contra Costa Water District	7,547,370,752	15%	139.9	28%
EBMUD	See Alameda Co.			
Martinez	871,695,210	15%	95.5	16%
Pittsburg	2,226,323,000	10%	100.4	20%
<b>Marin County</b>				
Marin Municipal	3,966,662,221	15%	107.4	20%
North Marin	1,986,810,000	19%	129.1	24%
<b>Napa County</b>				
American Canyon	777,155,653	15%	93.5	16%
Napa	3,247,435,321	10%	109.2	20%
<b>Santa Clara County</b>				
Gilroy	1,995,678,000	14%	117.5	24%
Milpitas	2,424,775,231	11%	72.3	12%
Mountain View	2,531,213,885	15%	82.5	16%
Palo Alto	2,685,999,460	16%	116.8	24%
San Jose (City)	4,707,000,000	11%	96.0	20%
San Jose Hills	6,833,016,444	5%	120.3	24%
San Jose Water Company	31,608,300,000	12%	105.7	20%
Santa Clara	4,749,500,000	11%	88.3	16%
Sunnyvale	3,929,970,221	15%	85.2	16%
<b>San Francisco</b>				
SFPUC	18,717,900,000	8%	45.4	8%